



Submittal Data Sheet

3.0-Ton Wall Mounted Unit

FTXS36LVJURXS36LVJU

BENEFITS

- Intelligent eye occupancy sensor
- Weekly timer for programmable comfort
- Low ambient heat operation down to 0° F
- Titanium apatite photocatalytic air purifying

INDOOR UNIT



OUTDOOR UNIT





Submittal Data Sheet

3.0-Ton Wall Mounted Unit

FTXS36LVJURXS36LVJU

SYSTEM PERFORMANCE

Indoor Unit Model No.	FTXS36LVJU	Indoor Unit Name:	SKYAIR WALL MOUNTED
Outdoor Unit Model No.	RXS36LVJU	Outdoor Unit Name:	RXS36LVJU
Rated Cooling Capacity (Btu/hr):	36,000	Rated Cooling Conditions:	Indoor (°F DB/WB): 80 / 67 Ambient (°F DB/WB): 95 / 75
Sensible Capacity (Btu/hr):	22,390	Rated Piping Length(ft):	
Max/Min Cooling Capacity (Btu/hr):	/	Rated Height Difference (ft):	65.60
Cooling Input Power (kW):	4.000	Rated Heating Conditions:	Indoor (°F DB/WB): 70 / 70 Ambient (°F DB/WB): 47 / 43
SEER (Non-Ducted/Ducted):	17.90 /	HSPF (Non-Ducted/Ducted):	8.3 /
EER (Non-Ducted/Ducted):	8.37 /		
Rated Heating Capacity (Btu/hr):	38,000		
Heating Input Power (kW):	3.90		

SYSTEM DETAILS

Refrigerant Type:	R-410A	Cooling Operation Range (°F DB):	14 - 115
Holding Refrigerant Charge (lbs):	6.2	Heating Operation Range (°F WB):	5 - 75
Additional Charge (lb/ft):	0.03	Max. Pipe Length (Vertical) (ft):	
Pre-charge Piping (Length) (ft):		Cooling Range w/Baffle (°F DB):	0 - 115
Max. Pipe Length (Total) (ft):	98	Heating Range w/Baffle (°F WB):	0 - 75
Max Height Separation (Ind to Ind ft):	66		



Submittal Data Sheet

3.0-Ton Wall Mounted Unit

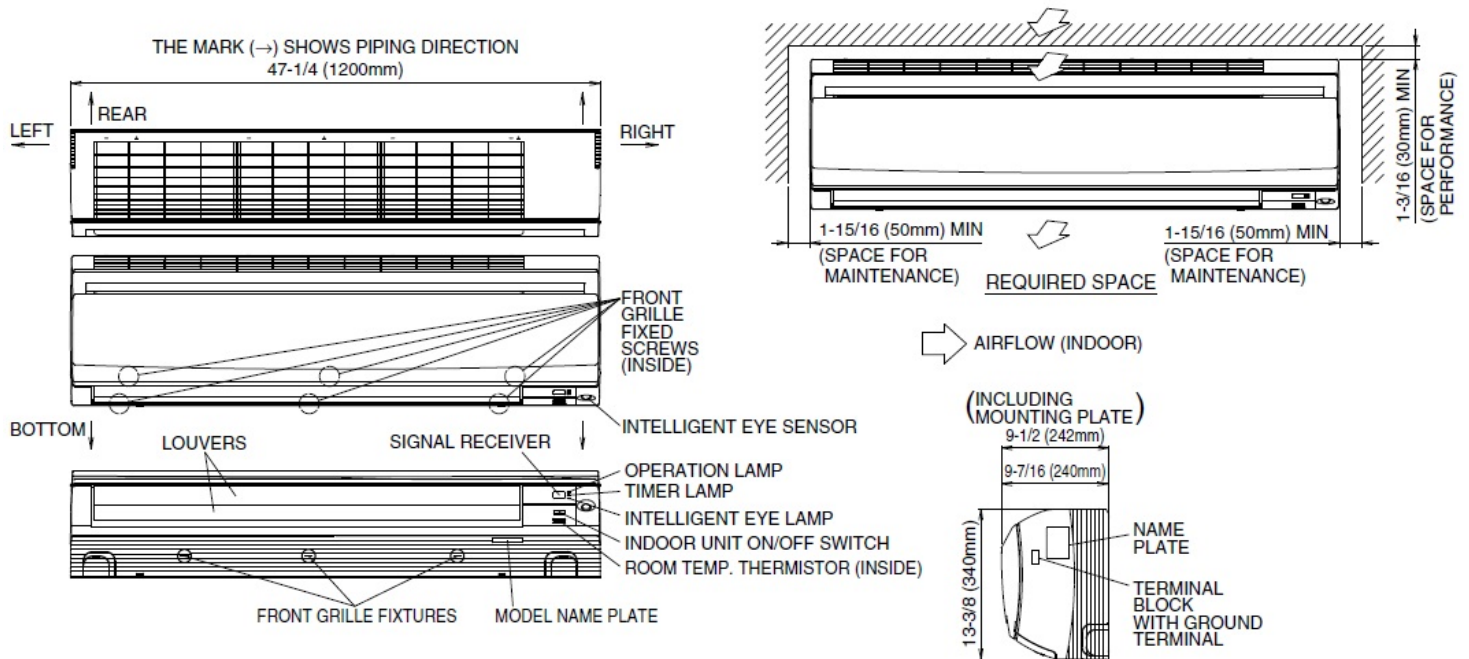
FTXS36LVJURXS36LVJU

INDOOR UNIT DETAILS

Power Supply (V/Hz/Ph):	208-230 / 60 / 1	Airflow Rate (H/M/L) (CFM):	770/519/473
Power Supply Connections:	L1, L2, Ground	Moisture Removal (Gal/hr):	
Min. Circuit Amps MCA (A):		Gas Pipe Connection (inch):	5/8
Max Overcurrent Protection (MOP) (A):		Liquid Pipe Connection (inch):	3/8
Dimensions (HxWxD) (in):	13-3/8 x 47-1/4 x 9-7/16	Condensate Connection (inch):	
Panel (HxWxD) (in):		Sound Pressure (H/M) (dBA):	47/40
Net Weight (lb):	38	Sound Power Level (dBA):	
Panel Weight (lb):		Ext. Static Pressure (Rated/Max) (inWg):	/

DIMENSIONAL DRAWING - INDOOR UNIT

FTXS30/36LVJU





Submittal Data Sheet

3.0-Ton Wall Mounted Unit

FTXS36LVJURXS36LVJU

OUTDOOR UNIT DETAILS

Power Supply (V/Hz/Ph):	208-230 / 60 / 1	Compressor Type:	Inverter
Power Supply Connections:	L1, L2, Ground	Capacity Control Range (%):	-
Min. Circuit Amps MCA (A):	19.50	Airflow Rate (H) (CFM):	2,627
Max Overcurrent Protection (MOP) (A):	20.00	Gas Pipe Connection (inch):	5/8
Max Starting Current MSC(A):		Liquid Pipe Connection (inch):	3/8
Rated Load Amps RLA(A):	20.3	Sound Pressure (H) (dBA):	54
Dimensions (HxWxD) (in):	38-15/16 x 37 x 12-5/8	Sound Power Level (dBA):	68
Net Weight (lb):	179		

DIMENSIONAL DRAWING - OUTDOOR UNIT

RKS30/36LVJU, RXS30/36LVJU

