



## Submittal Data Sheet

1.0-Ton Slim Duct Built-in Concealed Ceiling Unit

FDXS12LVJURXS12LVJU

### FEATURES

- Intelligent eye occupancy sensor
- Weekly timer for programmable comfort
- Low ambient heat operation down to 0° F
- Low ambient cooling kit available
- 12 year limited parts and compressor warranty with online registration

### BENEFITS

- Compact design

### INDOOR UNIT



### OUTDOOR UNIT





## Submittal Data Sheet

1.0-Ton Slim Duct Built-in Concealed Ceiling Unit

FDXS12LVJURXS12LVJU

### SYSTEM PERFORMANCE

Indoor Unit Model No.	FDXS12LVJU	Indoor Unit Name:	FDXS12LVJU
Outdoor Unit Model No.	RXS12LVJU	Outdoor Unit Name:	RXS12LVJU
Rated Cooling Capacity (Btu/hr):	11,500	Rated Cooling Conditions:	Indoor (°F DB/WB): 80 / 67 Ambient (°F DB/WB): 95 / 75
Sensible Capacity (Btu/hr):	8,280	Rated Piping Length(ft):	
Max/Min Cooling Capacity (Btu/hr):	11,500 / 4,800	Rated Height Difference (ft):	49.20
Cooling Input Power (kW):	1.260	Rated Heating Conditions:	Indoor (°F DB/WB): 70 / 70 Ambient (°F DB/WB): 47 / 43
SEER (Non-Ducted/Ducted):	15.50 /	HSPF (Non-Ducted/Ducted):	10.4 /
EER (Non-Ducted/Ducted):	9.10 /	Heating COP (Non-Ducted/Ducted):	3.5 /
Rated Heating Capacity (Btu/hr):	11,500		
Max/Min Heating Capacity (Btu/hr):	11,500 / 4,800		
Heating Input Power (kW):	0.96		

### SYSTEM DETAILS

Refrigerant Type:	R-410A	Cooling Operation Range (°F DB):	14 - 115
Holding Refrigerant Charge (lbs):	2.7	Heating Operation Range (°F WB):	5 - 64
Additional Charge (lb/ft):	0.21	Max. Pipe Length (Vertical) (ft):	
Pre-charge Piping (Length) (ft):		Cooling Range w/Baffle (°F DB):	0 - 115
Max. Pipe Length (Total) (ft):	66	Heating Range w/Baffle (°F WB):	0 - 77
Max Height Separation (Ind to Ind ft):	49		

## Submittal Data Sheet

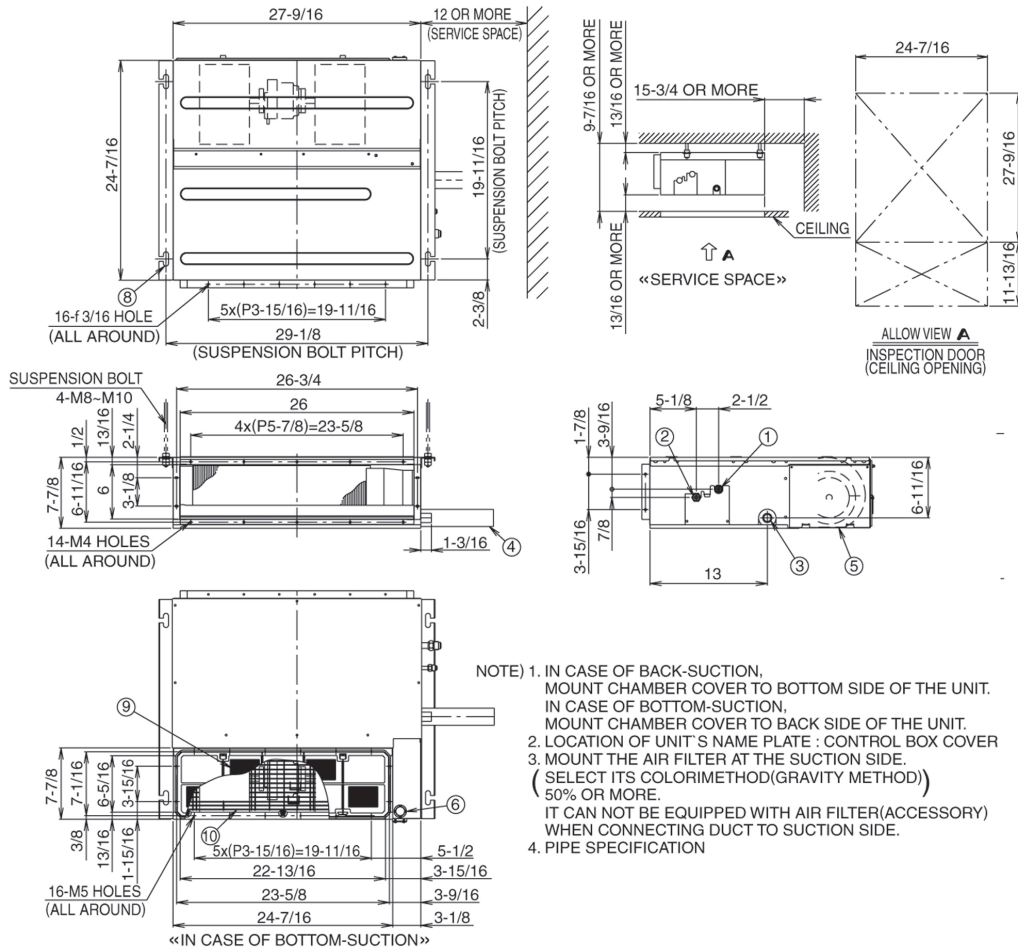
1.0-Ton Slim Duct Built-in Concealed Ceiling Unit

FDXS12LVJURXS12LVJU

### INDOOR UNIT DETAILS

Power Supply (V/Hz/Ph):	208-230 / 60 / 1	Airflow Rate (H/M/L) (CFM):	305/260/235
Power Supply Connections:	L1, L2, Ground	Moisture Removal (Gal/hr):	32.0
Min. Circuit Amps MCA (A):		Gas Pipe Connection (inch):	3/8
Max Overcurrent Protection (MOP) (A):		Liquid Pipe Connection (inch):	1/4
Dimensions (HxWxD) (in):	7-7/8 x 27-9/16 x 24-7/16	Condensate Connection (inch):	1-1/32
Panel (HxWxD) (in):		Sound Pressure (H/M/L) (dBA):	35/31/31
Net Weight (lb):	47	Sound Power Level (dBA):	51
Panel Weight (lb):		Ext. Static Pressure (Rated/Max) (inWg):	0.12 / 0.12

## DIMENSIONAL DRAWING - INDOOR UNIT





## Submittal Data Sheet

1.0-Ton Slim Duct Built-in Concealed Ceiling Unit

FDXS12LVJURXS12LVJU

### OUTDOOR UNIT DETAILS

Power Supply (V/Hz/Ph):	208-230 / 60 / 1	Compressor Type:	Inverter
Power Supply Connections:	L1, L2, Ground	Capacity Control Range (%):	-
Min. Circuit Amps MCA (A):	8.80	Airflow Rate (H) (CFM):	1,183
Max Overcurrent Protection (MOP) (A):	15.00	Gas Pipe Connection (inch):	3/8
Max Starting Current MSC(A):		Liquid Pipe Connection (inch):	1/4
Rated Load Amps RLA(A):	5.3	Sound Pressure (H) (dBA):	49
Dimensions (HxWxD) (in):	21-5/8 x 30-1/8 x 11-1/4	Sound Power Level (dBA):	61
Net Weight (lb):	75		

## DIMENSIONAL DRAWING - OUTDOOR UNIT

RXS09/12D(A)VJU  
Unit (in.)

