



## Submittal Data Sheet

2.5-Ton Wall Mounted Unit

FTXS30LVJURXS30LVJU

### FEATURES

- Intelligent eye occupancy sensor
- Weekly timer for programmable comfort
- Low ambient heat operation down to 0° F
- Titanium apatite photocatalytic air purifying

### BENEFITS

- Quiet operation

### INDOOR UNIT



### OUTDOOR UNIT





## Submittal Data Sheet

2.5-Ton Wall Mounted Unit

FTXS30LVJURXS30LVJU

### SYSTEM PERFORMANCE

Indoor Unit Model No.	FTXS30LVJU	Indoor Unit Name:	SKYAIR WALL MOUNTED
Outdoor Unit Model No.	RXS30LVJU	Outdoor Unit Name:	RXS30LVJU
Rated Cooling Capacity (Btu/hr):	30,000	Rated Cooling Conditions:	Indoor (°F DB/WB): 80 / 67 Ambient (°F DB/WB): 95 / 75
Sensible Capacity (Btu/hr):	19,940	Rated Piping Length(ft):	
Max/Min Cooling Capacity (Btu/hr):	/	Rated Height Difference (ft):	65.60
Cooling Input Power (kW):	2.800	Rated Heating Conditions:	Indoor (°F DB/WB): 70 / 70 Ambient (°F DB/WB): 47 / 43
SEER (Non-Ducted/Ducted):	19.30 /	HSPF (Non-Ducted/Ducted):	8.3 /
EER (Non-Ducted/Ducted):	10.71 /		
Rated Heating Capacity (Btu/hr):	34,800		
Heating Input Power (kW):	3.90		

### SYSTEM DETAILS

Refrigerant Type:	R-410A	Cooling Operation Range (°F DB):	14 - 115
Holding Refrigerant Charge (lbs):	6.2	Heating Operation Range (°F WB):	5 - 75
Additional Charge (lb/ft):	0.03	Max. Pipe Length (Vertical) (ft):	
Pre-charge Piping (Length) (ft):		Cooling Range w/Baffle (°F DB):	0 - 115
Max. Pipe Length (Total) (ft):	98	Heating Range w/Baffle (°F WB):	0 - 75
Max Height Separation (Ind to Ind ft):	66		



## Submittal Data Sheet

2.5-Ton Wall Mounted Unit

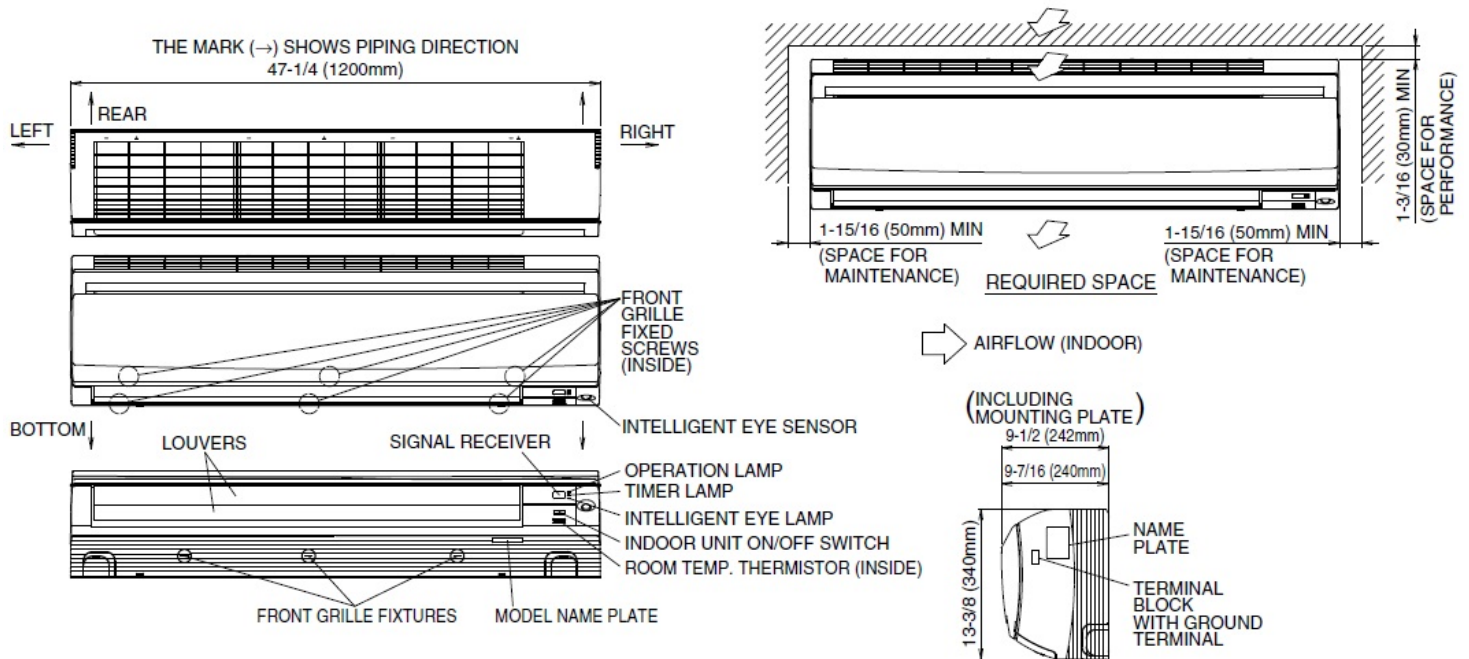
FTXS30LVJURXS30LVJU

### INDOOR UNIT DETAILS

Power Supply (V/Hz/Ph):	208-230 / 60 / 1	Airflow Rate (H/M/L) (CFM):	706/519/473
Power Supply Connections:	L1, L2, Ground	Moisture Removal (Gal/hr):	
Min. Circuit Amps MCA (A):		Gas Pipe Connection (inch):	5/8
Max Overcurrent Protection (MOP) (A):		Liquid Pipe Connection (inch):	3/8
Dimensions (HxWxD) (in):	13-3/8 x 47-1/4 x 9-7/16	Condensate Connection (inch):	
Panel (HxWxD) (in):		Sound Pressure (H/M) (dBA):	47/40
Net Weight (lb):	38	Sound Power Level (dBA):	
Panel Weight (lb):		Ext. Static Pressure (Rated/Max) (inWg):	/

## DIMENSIONAL DRAWING - INDOOR UNIT

### FTXS30/36LVJU





# Submittal Data Sheet

2.5-Ton Wall Mounted Unit

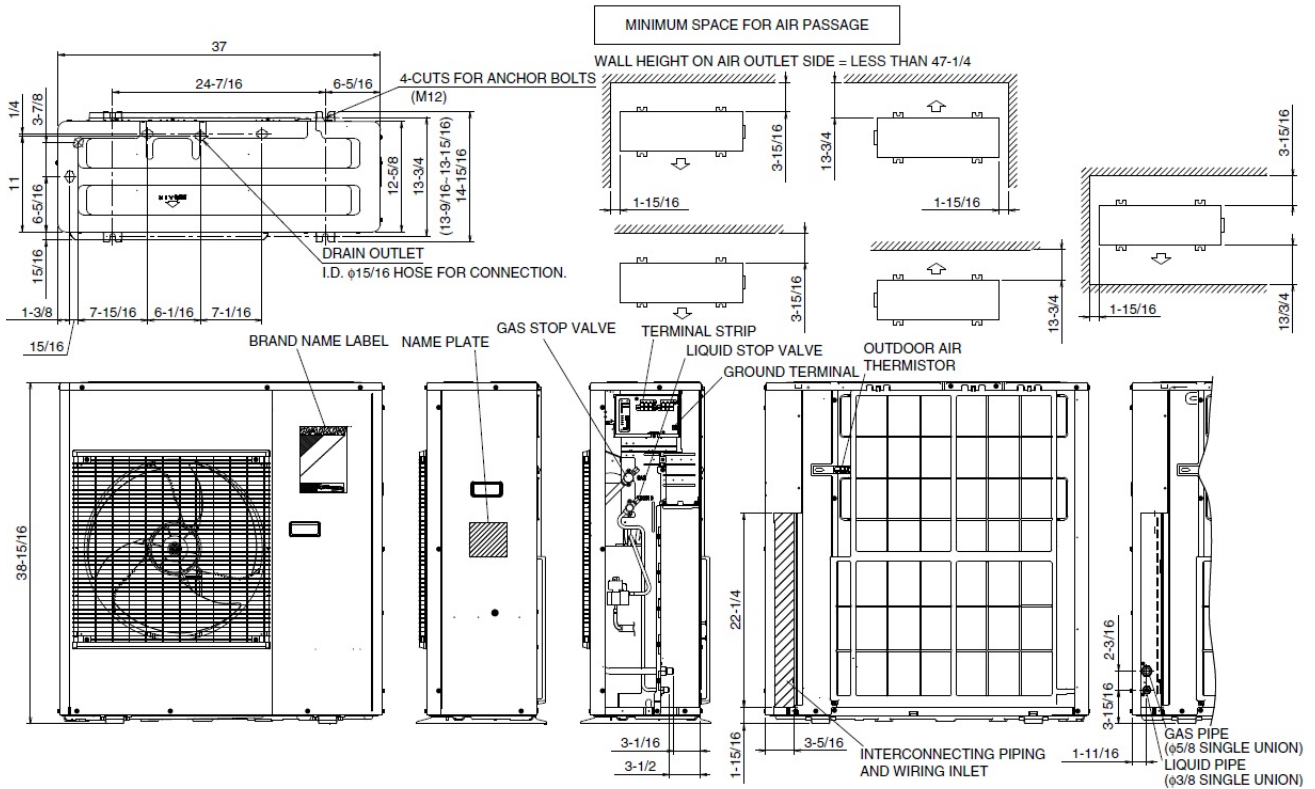
FTXS30LVJURXS30LVJU

**OUTDOOR UNIT DETAILS**

Power Supply (V/Hz/Ph):	208-230 / 60 / 1	Compressor Type:	Inverter
Power Supply Connections:	L1, L2, Ground	Capacity Control Range (%):	-
Min. Circuit Amps MCA (A):	19.50	Airflow Rate (H) (CFM):	2,627
Max Overcurrent Protection (MOP) (A):	20.00	Gas Pipe Connection (inch):	5/8
Max Starting Current MSC(A):		Liquid Pipe Connection (inch):	3/8
Rated Load Amps RLA(A):	18.1	Sound Pressure (H) (dBA):	54
Dimensions (HxWxD) (in):	38-15/16 x 37 x 12-5/8	Sound Power Level (dBA):	68
Net Weight (lb):	179		

## DIMENSIONAL DRAWING - OUTDOOR UNIT

**RKS30/36LVJU, RXS30/36LVJU**



Daikin North America LLC, 5151 San Felipe, Suite 500, Houston, TX, 77056

Daikin City Generated Submittal Data

[www.daikinac.com](http://www.daikinac.com) [www.daikincomfort.com](http://www.daikincomfort.com)

(Daikin's products are subject to continuous improvements. Daikin reserves the right to modify product design, specifications and information in this data sheet without notice and without incurring any obligations)