

Inverter Driven Heat Pump

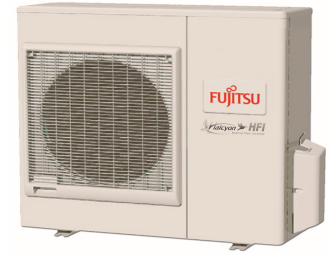
18,000 BTU Single Zone Wall Mounted System

Job Name _____
 Location _____
 Engineer _____
 Submitted To _____
 Submitted By _____
 Reference _____

Date _____
 Approval _____
 Construction _____
 Unit No _____
 Drawing No _____

PRODUCT FEATURES

Auto Changeover
 24 hr. Timer
 Auto Louver: 4 way
 Minimum Heat Mode
 Wireless Remote control
 Auto Restart
 Economy Mode
 Auto Fan Mode



MODEL NUMBERS

Indoor Unit	ASU18RLF
Outdoor Unit	AOU18RLXFW1
System	18RLXFW1

EFFICIENCIES

SEER	20.0
EER	13.3
HSPF	10.5
COP	3.50
	12.0

OUTDOOR TEMPERATURE OPERATION RANGE

Cooling	*F(*C)	-5 to 115 (-20 to 46)
Heating		-5 to 75 (-20 to 24)

CAPACITIES

Cooling	Rated	BTU/hW	18,000
	Min.-Max.		7000-23000
Heating	Rated		21,600
	Min.-Max.		7000-29000

LINESET REQUIREMENTS

Connection Method		Flare
Liquid	in (mm)	Ø 3/8 (Ø 9.52)
Gas		Ø 5/8 (Ø 15.88)
Pre-Charge Length	ft (m)	66 (20)
Minimum Length		16 (5)
Maximum Length		164 (50)
Max. Height Diff.		98 (30)

INDOOR DIMENSIONS & WEIGHT

Net (H x W x D)	in	12-5/8 x 39-5/16 x 9
	mm	320 x 998 x 228
Gross (H x W x D)	in	12-3/5 x 42-15/16 x 16-7/8
	mm	319 x 1090 x 429
Net Weight	lb (kg)	31 (14)
Gross Weight		40 (18)

OUTDOOR DIMENSIONS & WEIGHT

Net (H x W x D)	in	32-11/16 x 35-7/16 x 13
	mm	830 x 900 x 330
Gross (H x W x D)	in	39-3/8 x 41-5/16 x 17-1/2
	mm	1,000 x 1,050 x 445
Net Weight	lb (kg)	135 (61)
Gross Weight		152 (69)

Warranty Information



7 Year Compressor, 5 Year Parts out-of-the-box Warranty



10 Year Compressor, 10 Year Parts Warranty when registered within 60 days of installation in a residence



12 Year Compressor, 12 Year Parts Warranty when registered within 60 days of installation in a residence, and installed by a Fujitsu Elite contractor

ACCESSORIES

UTY-TTRX	3rd Party Thermostat Converter
UTY-RNNUM	Wired Remote
UTY-RVNUM	Wired Remote w/backlight
UTY-RSNUM	Simple Remote
UTY-XWZX	Dry Contact Wire Kit
FJ-RC-WIFI-1NA	Intesis Wired WiFi Module
FJ-IR-WIFI-1NA	Intesis IR WiFi Module
UTY-TFNXZ2	WiFi Interface Module



This system combination is Energy Star qualified



Indoor Unit ETL#: 3170288
 Outdoor Unit ETL#: 91987

Due to continuous product improvements, specifications are subject to change without notice. Please log in to the Fujitsu Portal for the most up-to-date documentation
<https://portal.fujitsugeneral.com>

Effective Date: 2/28/2019

Version 18RLXFW1 -2019B

Fujitsu General America, Inc. • 353 Route 46 West Fairfield, NJ 07004 • Toll Free: (888) 888-3424 • www.fujitsugeneral.com

Inverter Driven Heat Pump

18,000 BTU Single Zone Wall Mounted System

FAN DATA

Indoor Unit Airflow Rate	Cooling	High	CFM (m3/h)	541 (920)
		Medium		435 (740)
		Low		365 (620)
		Quiet		306 (520)
	Heating	High		541 (920)
		Medium		435 (740)
		Low		365 (620)
		Quiet		318 (540)
Outdoor Unit Airflow Rate	Cooling		1,489 (2,530)	
	Heating		1,489 (2,530)	

SOUND PRESSURE

Indoor Unit	Cooling	High	dB (A)	43
		Medium		37
		Low		33
		Quiet		28
	Heating	High		44
		Medium		37
		Low		33
		Quiet		28
Outdoor Unit	Cooling		47	
	Heating		50	

REFRIGERANT

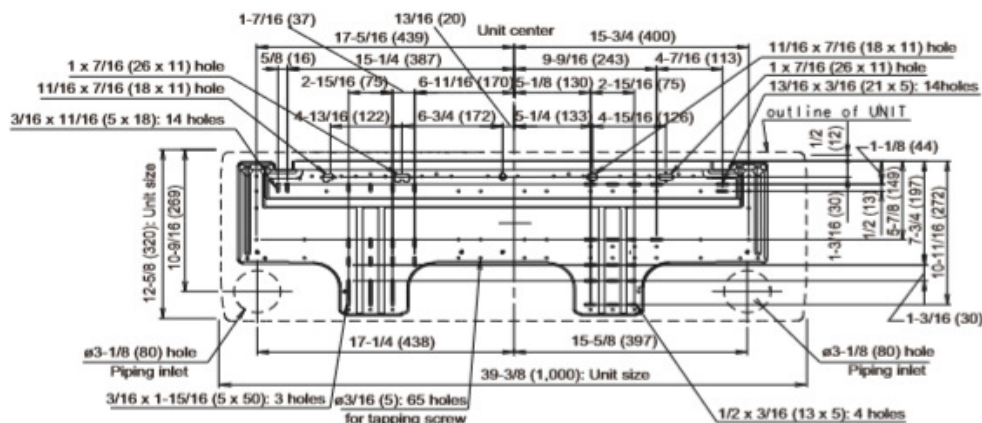
Type	R410A	
Charge	lb oz	4 lb 10.1 oz
	kg	2,100
Oil Type	POE (RB68)	

ELECTRICAL SPECIFICATIONS

ELECTRICAL REQUIREMENTS				
Voltage/Frequency/Phase				208/230V~60HZ
Voltage Range				187-253V~60HZ
Current	Cooling	Rated	A	6.2
	Heating	Rated		8
Maximum Operating Current		Cooling		13.5
		Heating		14.5
Starting Current				8
MCA			17	
Maximum Circuit Breaker			20	
Input Power	Cooling	Rated	kW	1.35
		Min.—Max.		0.50—3.01
	Heating	Rated		1.8
		Min.—Max.		0.48—3.23
Power Factor	Cooling		%	95
	Heating			97.6

OTHER

Moisture Removal		pints/h (L/h)	2.8(5.9)
Energy Star			YES
Drain hose	Material		PVC
Size	in (mm)	Ø 15/32 (Ø 12) (I.D.), Ø 5/8 (Ø 16) (O.D.)	
Operation Range	Cooling	°F (°C)	64 to 90 (18 to 32)
		%RH	80 or less
	Heating	°F (°C)	88 (30) or less

Wall Bracket Data:

The Fujitsu logo is a worldwide trademark of Fujitsu General Limited. The Halcyon logo and name is a worldwide trademark of Fujitsu General Limited and is a registered trademark in Japan, the USA and other countries or areas. Copyright 2018 Fujitsu General America, Inc. Fujitsu's products are subject to continuous improvements. Fujitsu reserves the right to modify product design, specifications and information in this brochure without notice and without incurring any obligations.

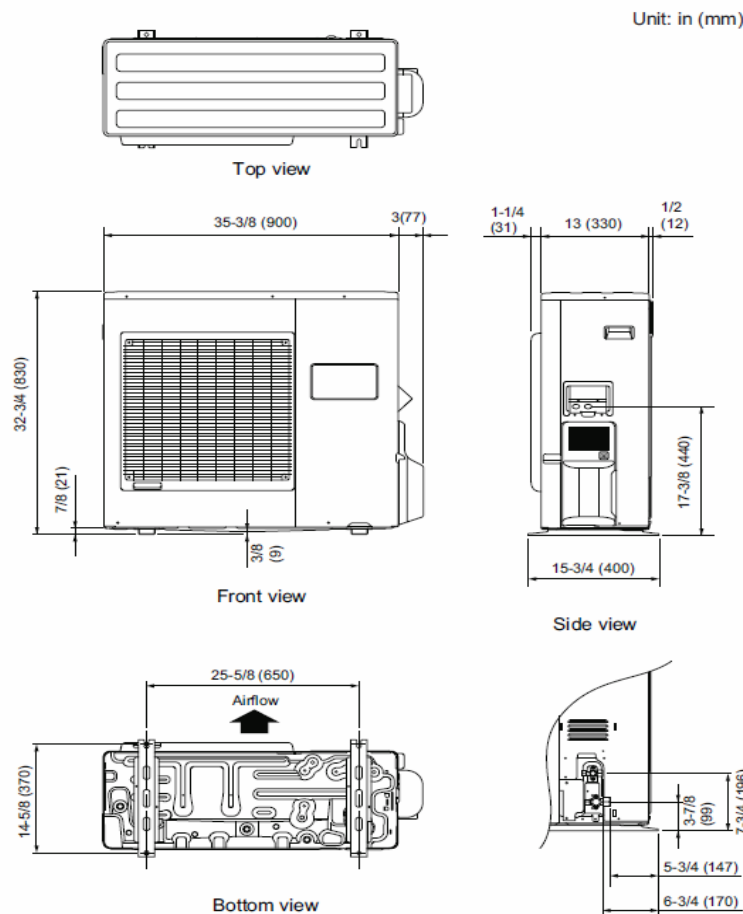
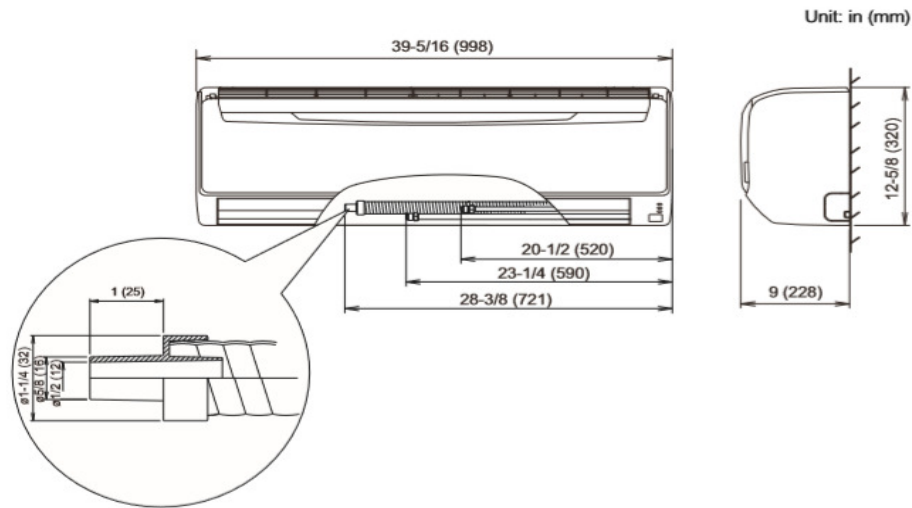
Note: Specifications are based on the following conditions:
Cooling: Indoor temperature of 80°F (26.7°C) DB/67°F (19.4°C) WB, and outdoor temperature of 95°F (35°C) DB/75°F (23.9°C) WB. Heating: Indoor temperature of 70°F (21.1°C) DB/60°F (15.6°C) WB, and outdoor temperature of 47°F (8.3°C) DB/43°F (6.1°C) WB. Pipe length: 25ft. (7.5m). Height difference: 0ft. (0m) (Outdoor unit – indoor unit).

Inverter Driven Heat Pump

18,000 BTU Single Zone Wall Mounted System

DIMENSIONS

Units: In. (mm)



The Fujitsu logo is a worldwide trademark of Fujitsu General Limited. The Halcyon logo and name is a worldwide trademark of Fujitsu General Limited and is a registered trademark in Japan, the USA and other countries or areas. Copyright 2018 Fujitsu General America, Inc. Fujitsu's products are subject to continuous improvements. Fujitsu reserves the right to modify product design, specifications and information in this brochure without notice and without incurring any obligations.

Note: Specifications are based on the following conditions:
 Cooling: Indoor temperature of 80°F (26.7°C) DB/67°F (19.4°C) WB, and outdoor temperature of 95°F (35°C) DB/75°F (23.9°C) WB. Heating: Indoor temperature of 70°F (21.1°C) DB/60°F (15.6°C) WB, and outdoor temperature of 47°F (8.3°C) DB/43°F (6.1°C) WB. Pipe length: 25ft. (7.5m). Height difference: 0ft. (0m) (Outdoor unit - indoor unit).